

NCTF-RH Update

House Special Committee on Red Hill



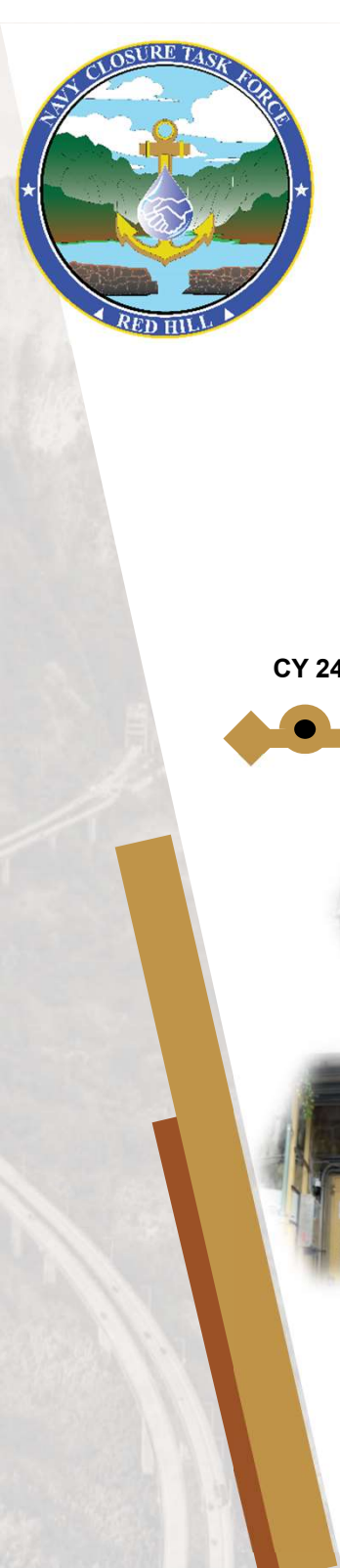
14 JULY 2025



Apple



Android



Lines of Effort

Decommission:

AFFF Removal

Tank Cleaning

Pipeline Removal

CY 24

CY 25

CY 26

CY 27

CY 28+



Ongoing: Environmental & Remediation

Strengthening Water Resiliency and Continuing Safe Drinking Water

Environmental Monitoring and Modeling

Site Assessment and Remediation

Communication

Persistent Stakeholder Engagement Through Multiple Channels

Website, Mobile
App & Dashboard

Drinking Water
Info Booths

Government /
Community Meetings

Open Houses

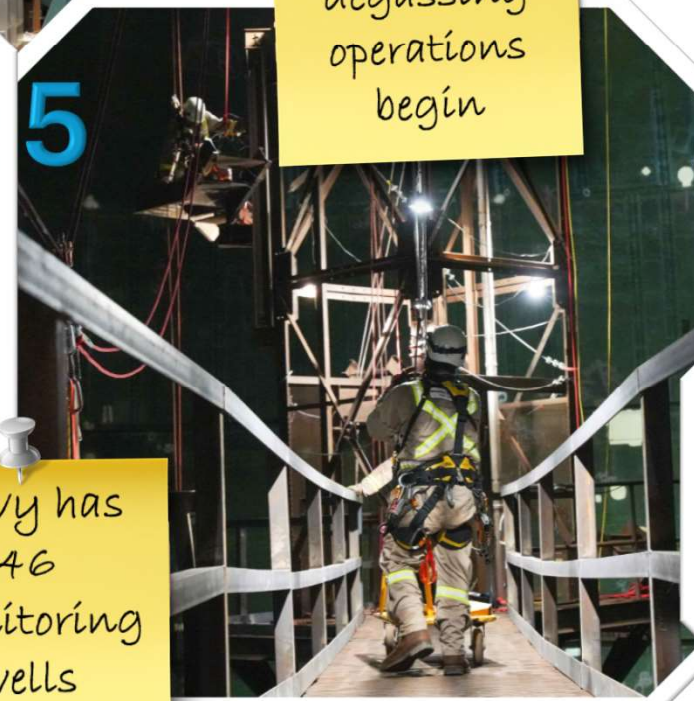
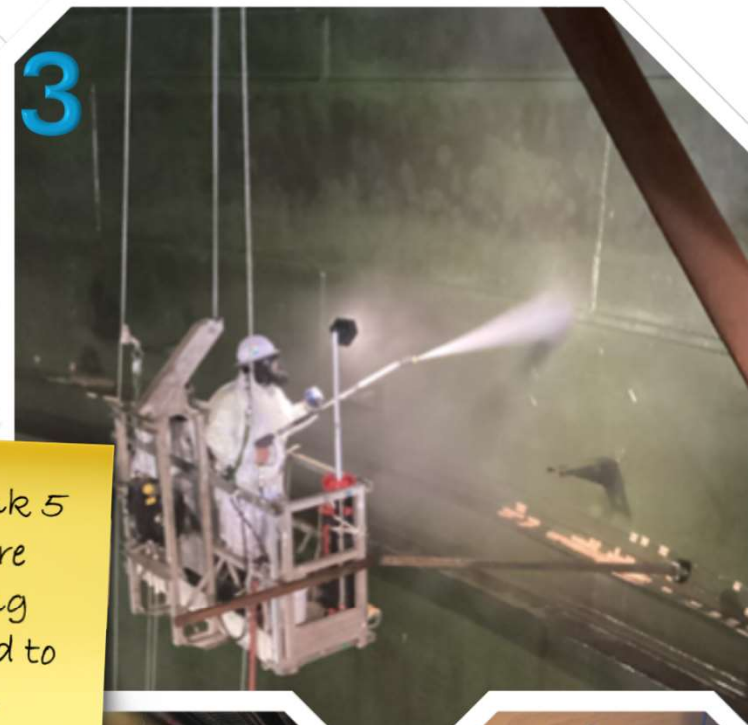
Neighborhood Boards

Vodcasts / Webinars



Operational Update

SAFE. DELIBERATE. ENGAGED. COMMITTED.



July: tank 2
degassing
operations
begin

July: tank 5
pressure
washing
scheduled to
begin

Navy has
46
monitoring
wells



Tank Closure Plan Supplement 4

SAFE. DELIBERATE. ENGAGED. COMMITTED.



NCTF-RH is not waiting for 'beneficial re-use' to be established and is proceeding with closing the facility in accordance with regulatory requirements.



RH tanks and surge tanks: interior and exterior tank components will be verified empty and/or clean or removed. Regulator-approved tank cleaning verification plan available online.



RH tanks and surge tanks will be closed in place.



RH tanks will be allowed to passively vent to the upper and lower tunnels.



Drainage from each RH tank will be open to the main sump, and the drainage pathway via the Fuel Oil Reclamation (FOR) line to Tank 311 will be maintained.



Water Resiliency

SAFE. DELIBERATE. ENGAGED. COMMITTED.

Pathway to **Resiliency**, **Redundancy** and **Security** to the JBPHH Drinking Water System

- Infrastructure Improvements
- Leak Detection Programs
- Cybersecurity Improvements
- Treatment Systems
- Shaft Reactivation
- Watershed Projects



Joint effort between NCTF-RH, JBPHH, NAVFAC and Navy Region Hawaii

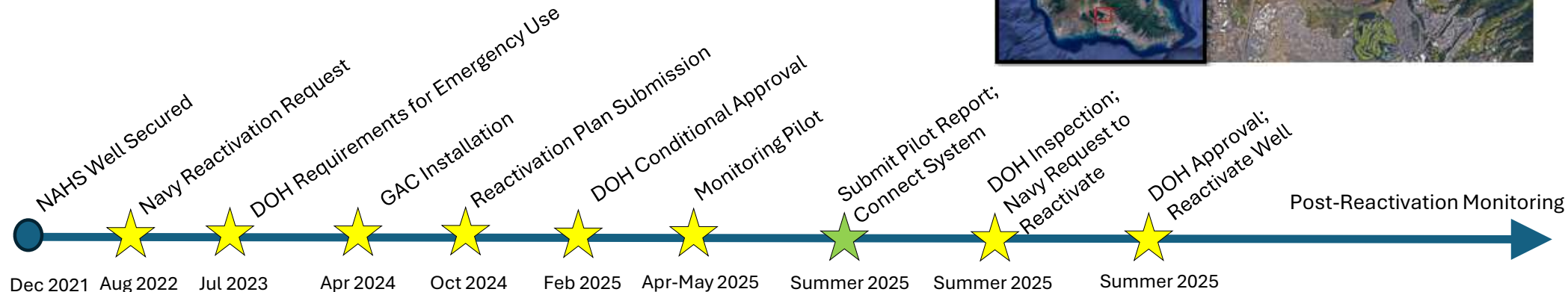
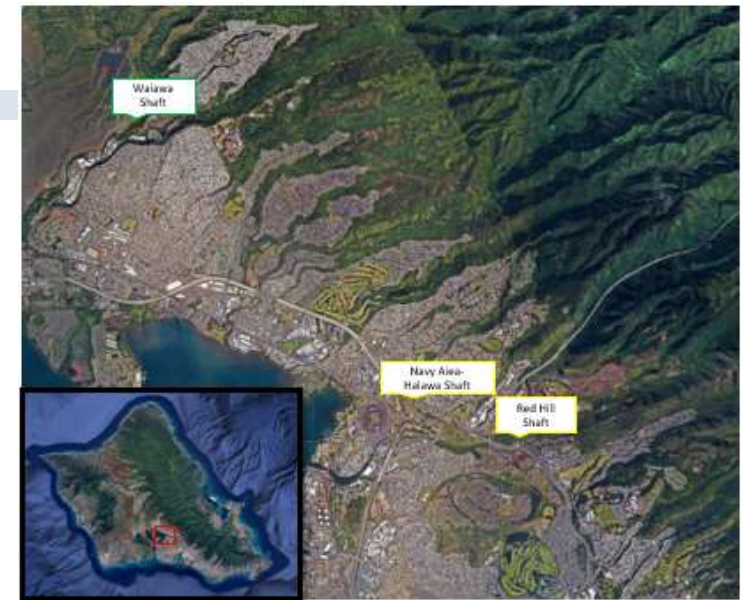


Navy Aiea-Halawa Shaft Reactivation

SAFE. DELIBERATE. ENGAGED. COMMITTED.

Overview

- One of three drinking water production wells supporting JBPHH – currently isolated from system
- Important asset for DoD utility resiliency
- Extensive monitoring
- Proactive installation of onsite treatment system



Communication

- NCTF-RH open houses
- Stakeholder engagements
- *Red Hill Highlights*
- Podcasts
- Public webinar
- NCTF-RH website
- Safewaters website
- DOH, CWRM, public notice



Returning to Compliance Monitoring

Nov. 2021 release impacts JBPHH system

Nov. 2021 - Dec. 2021

- Hawaii Department of Health (DOH) health advisory.

Interagency Drinking Water System Team

Dec. 2021 - Mar. 2022

- Team of experts from DOH, Environmental Protection Agency (EPA), Navy and Army formed to develop requirements.

JBPHH Drinking Water System Flushing

Dec. 2021 - Mar. 2022

- Complete flush of the JBPHH distribution system including all facilities and residences.
- DOH lifted health advisory, Mar. 2022: certified system as safe.

Drinking Water Long Term Monitoring

Mar. 2022 - Mar. 2024

- 24-month monitoring of the JBPHH drinking water.
- 9,200+ samples.
- 50+ analytes - metals, hydrocarbons, Synthetic Organic Compounds, and Volatile Organic Compounds.
- Repeated sampling of source and schools.
- 19 zones.

Extended Drinking Water Monitoring

Apr. 2024 - Mar. 2025

- Navy voluntarily implemented: approved by EPA.
- 6,200+ samples.
- 50+ analytes.
- Expanded fuel indicator compounds.
- New zone in Manana.
- Higher frequencies of priority areas.

Submit
Closeout
Report to
Regulators

Compliance Monitoring

- Recurring monitoring in accordance with the Safe Drinking Water Act for drinking water systems.
- Full drinking water analytes sampled for, plus required operational testing (bacteria/chlorine/etc).
- Reported to all consumers by the JBPHH consumer confidence report which is completed each summer.

+

- Lead and Copper Rule (LCR)
- Lead in Priority Area Rule (LIPA)



SAFE. DELIBERATE. ENGAGED. COMMITTED.

Ongoing Environmental Monitoring

2024 Highlights

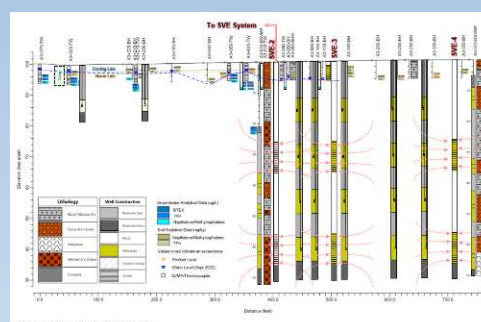
Looking Forward



Began site assessment of Red Hill facility.



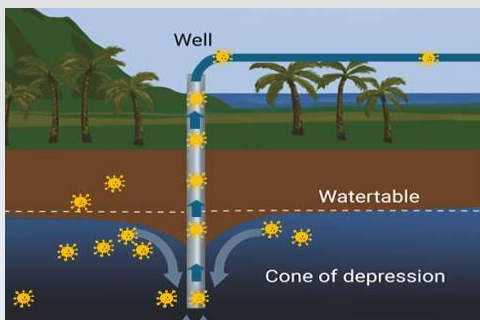
Monitored air quality during fuel tank ventilation.



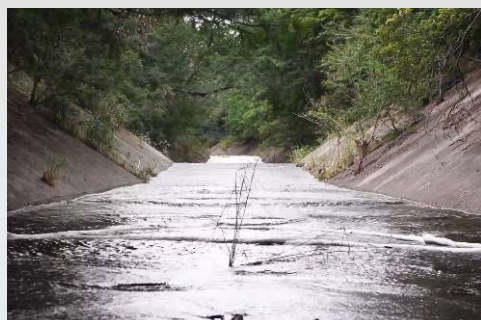
Continue remediation pilot study with deep soil vapor extraction.



Begin field investigation for site assessment.



Maintained capture zone at Red Hill Shaft via pumping.



Reduced daily discharge of filtered water from Red Hill Shaft into Hālawā Stream.



Environmental monitoring and capture zone at Red Hill.



Ongoing Hālawā Stream ecological monitoring.

NCTF-RH is committed to long term remediation and monitoring of Red Hill



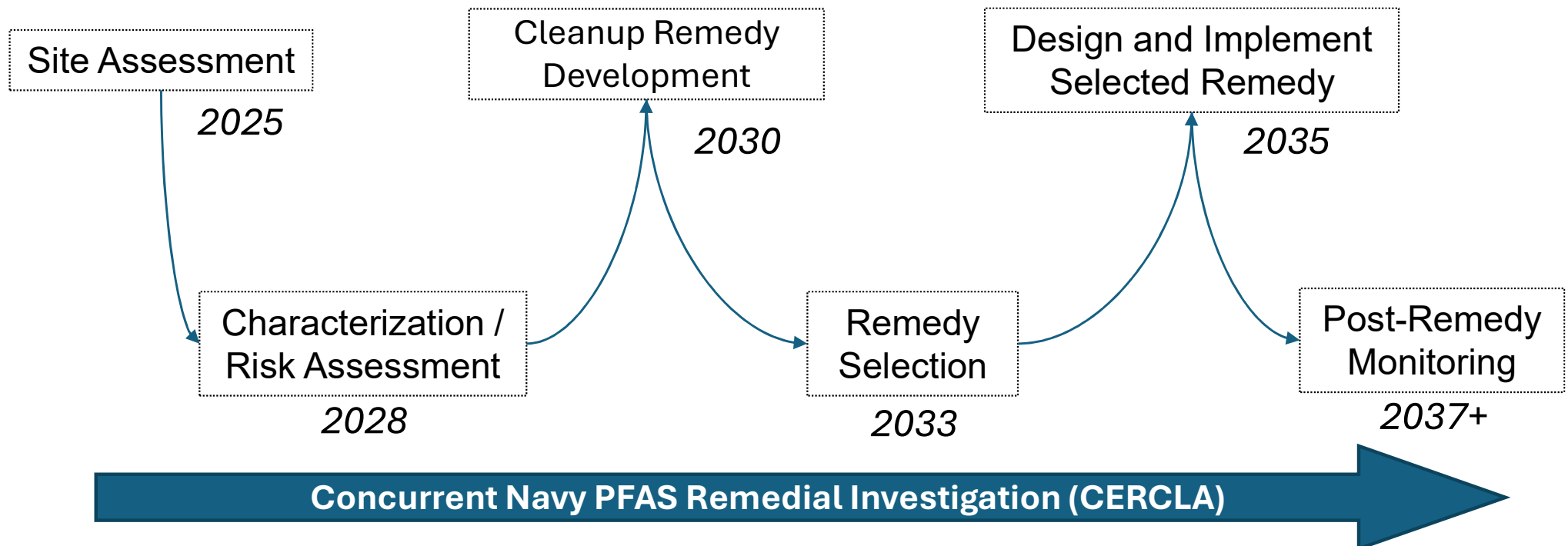
Site Assessment

SAFE. DELIBERATE. ENGAGED. COMMITTED.

Site Assessment

- Regulatory driven requirement
- Looks at historic releases (known and unknown)
- Conduct sampling and analysis to determine characterization of a release
- Deliberate, data-driven process

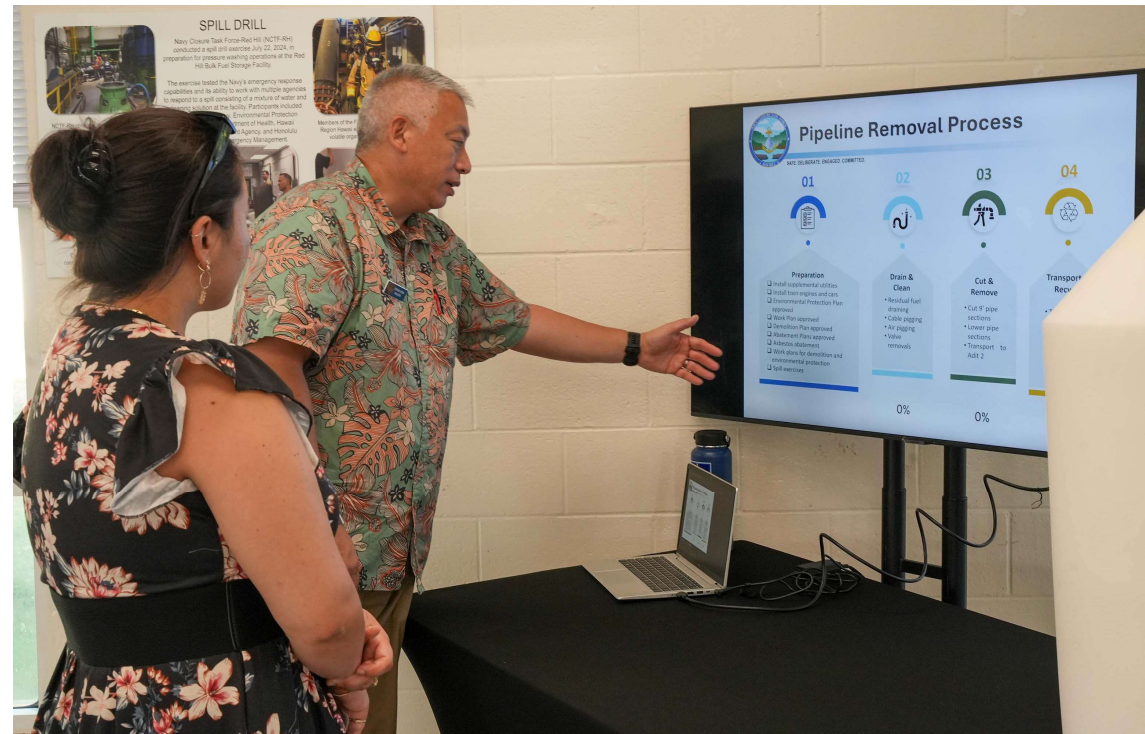
General Process Flow





Upcoming Quarterly Open House

- Wednesday, Aug. 20
- Oahu Veterans Center
 - 1298 Kukila St., Honolulu, HI 96818
- 5 p.m. - 7 p.m.
- Open to the public





Additional Information

SAFE. DELIBERATE. ENGAGED. COMMITTED.



Navy Closure Task Force–Red Hill

navyclosuretaskforce.navy.mil

- Document library for defueling & closure of Red Hill Bulk Fuel Storage Facility
- Photos & media gallery
- Upcoming public engagements
- Weekly Red Hill Highlights



Apple



Android

Download the free NCTF-RH app

- Interactive progress dashboard
- Latest news
- Photos & videos
- Presentations & fact sheets
- Air quality monitoring data



“Let’s Talk Red Hill” Vodcast

youtube.com/@NCTF-RH

- Updates and information regarding the closure of the Red Hill Bulk Fuel Storage Facility

